

RealMom™

The world's most lifelike birthing simulator.





Lifelike Mother and Baby

Wireless, full-body female simulator and full-term baby with unsurpassed realism and lifelike appearance. Features natural-feeling soft tissue and accurate internal anatomy with easy-to-feel landmarks and authentic pelvic structure. Available in Caucasian, Hispanic and African-American skin tones.



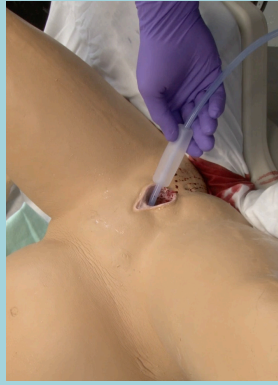
Natural Delivery

First-in-the-world natural delivery with active, soft tissue birth canal. Provides human-like, real-time dilation and fetal station with massageable fundus and amniotic reservoir. Also includes a fully-realistic uterus, placenta and umbilical cord.



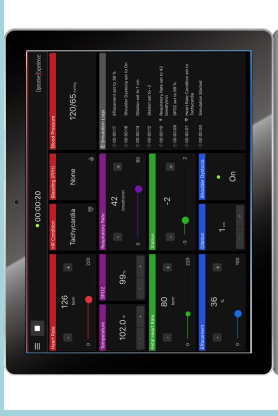
Fully Operable

Advanced internal skeletal structure simulates deliveries in all fetal positions. Practice difficult deliveries such as breech, shoulder dystocia, nuchal cord, cord prolapse, placenta previa and operative deliveries with forceps and vacuum assist.



Postpartum Hemorrhage

Realistic postpartum hemorrhage control with appropriate flow control and the ability to effectively stop hemorrhage with a Bakri or Ebb Balloon.



Tablet Control

Instructor control of dilation and fetal station. Physiological presentation and control of maternal and fetal heart rate, heart tones and contractions, pulses, blood pressure and SP02 with debriefing logs. Supports iOS, Android and any computer browser.



Simple and Affordable

More affordable than other competitive birthing simulators and with no complicated programming or set-ups so there's no simulator downtime.